



F1Tenth Power Board User Manual for V02.04

SWITCHES

- There are two switches on the Power Board namely SW1 and SW2
- Their use cases are as follows:
 - SW1 – Selection for VJACK (Wall Adapter) and VBAT (Battery Powered)
 - SW2 – Power ON and OFF
- When the Power Board is OFF using SW2 the position of the SW1 will be immaterial to the circuit.

CONNECTORS:

- Input Side
 - J9: Battery Connector/Socket
 - J10: DC Power Jack from the wall socket or Battery connector

Please note J10 can also take in input from a battery connector and with no changes to the other parts of the board will work as is.

- Output Side
 - J1: 12VDC output (at suggested current)
 - J2: 12VDC output (at suggested current)
 - J3: 5VDC output (at suggested current)
 - J4: 5VDC output (at suggested current)
 - J5: 12VDC output (at suggested current)
 - J6: 12VDC output (at suggested current)
 - J7: 19VDC output (at suggested current)

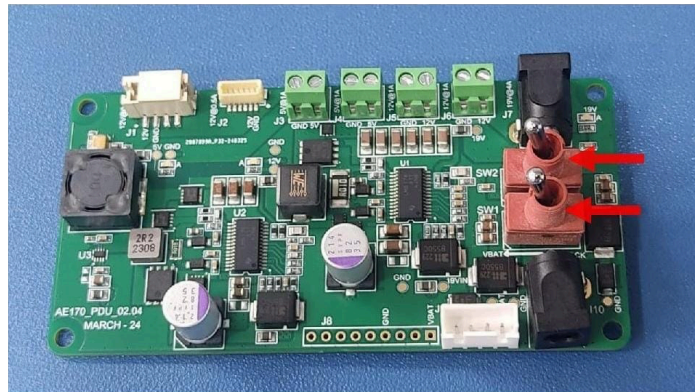
Please note that across **all output connectors put together** the total rated maximum current that can be drawn is as follows:

- 19VDC max current 4A
- 12VDC max current 2A
- 5VDC max current 1A

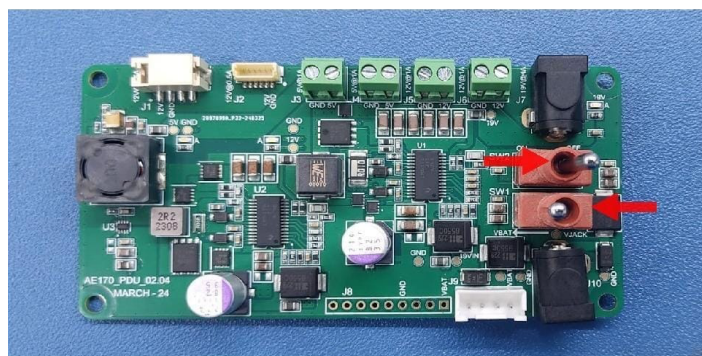


Various scenarios of the switch are explained below:

Scenario 1: Power Board OFF and SW1 is set up to take Power from the DC Power Jack



Scenario 2: Power Board ON and SW1 is set up to take Power from the DC Power Jack



Scenario 3: Power Board ON and SW1 is set up to take Power from the Battery

